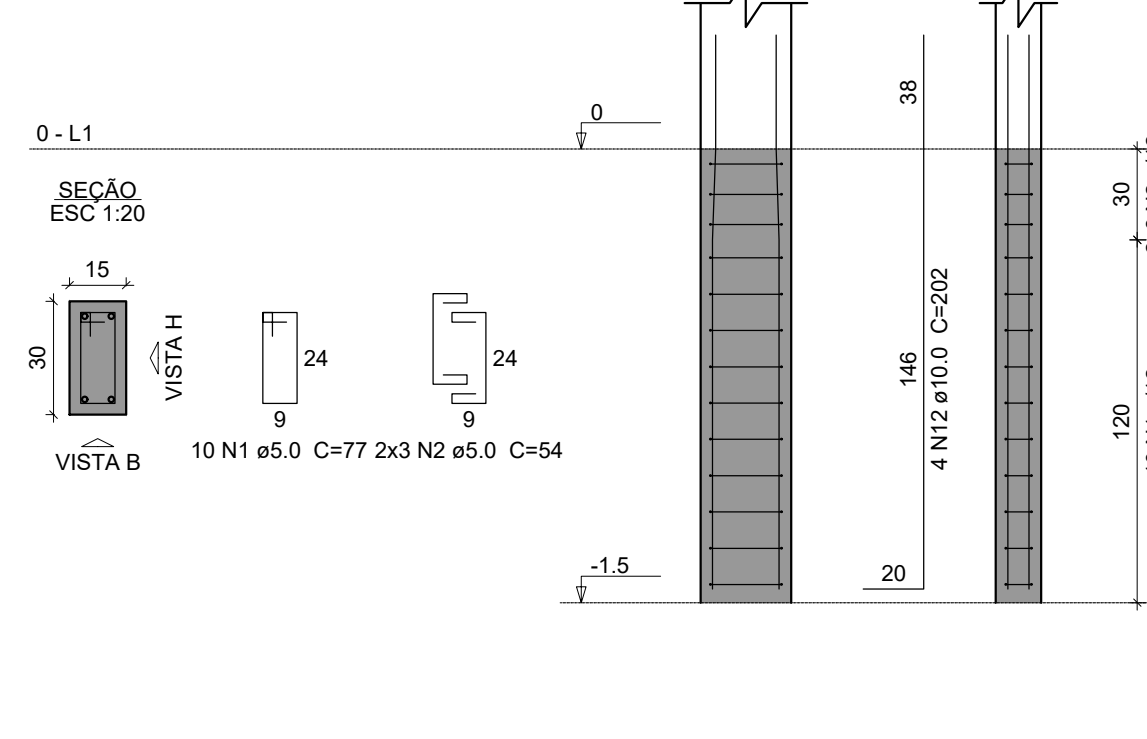
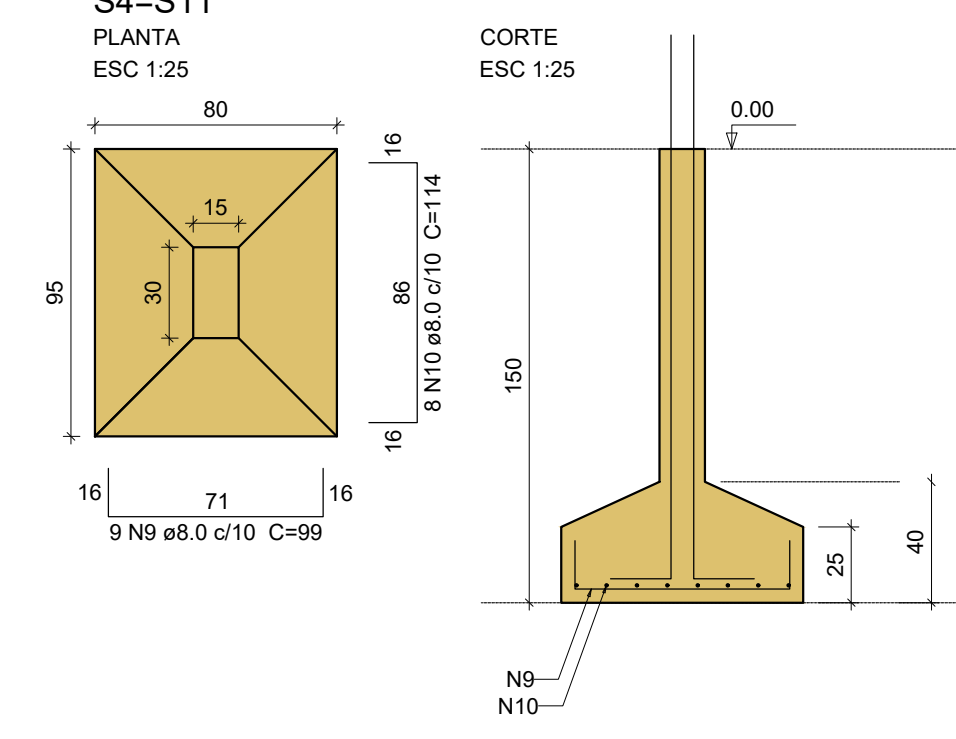
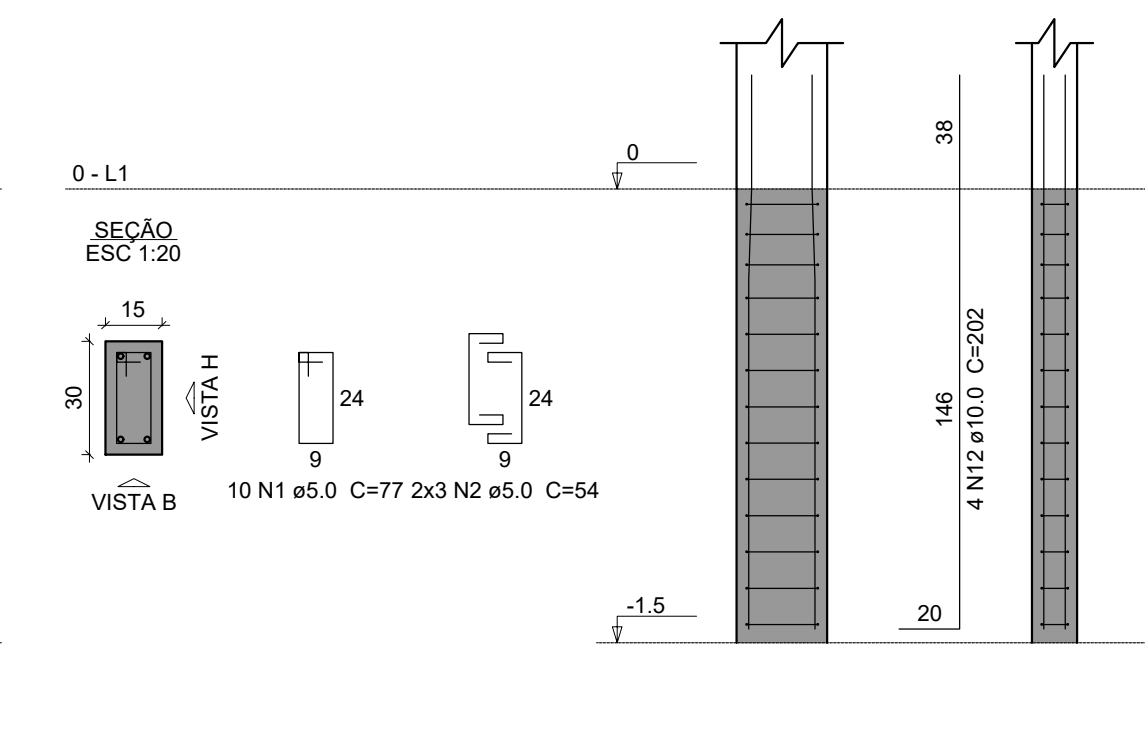
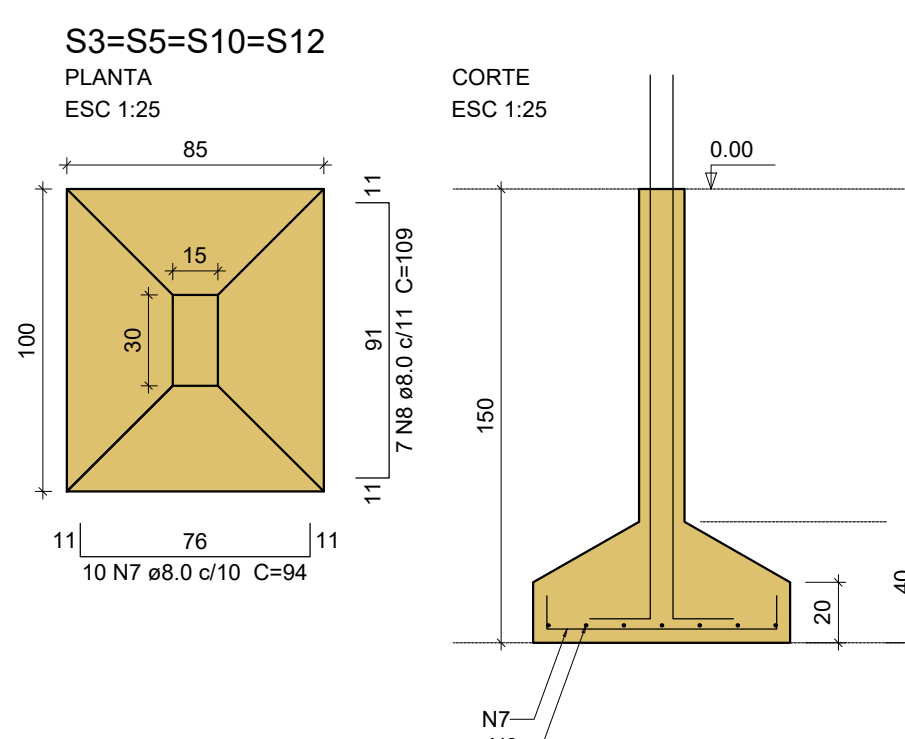


Relação do aço

2xS1	4xS13	4xS10	2xS14	2xS11
V2	V3	V3	V4	V1
V5	V6	V6	V4	V1
V8	V9	V9	V4	V7

AÇO	N	DIAM (mm)	QUANT	C.UNIT (cm)	C.TOTAL (cm)
CA60	1	5.0	417	77	32109
CA50	2	5.0	84	54	4536
	3	8.0	34	94	3196
	4	8.0	14	109	1526
	5	8.0	40	99	3960
	6	8.0	32	114	3648
	7	8.0	40	94	3760
	8	8.0	28	109	3052
	9	8.0	18	99	1782
	10	8.0	16	114	1824
	11	8.0	14	104	1456
	12	10.0	56	202	11312
	13	10.0	4	1072	4288
	14	10.0	4	272	1088
	15	10.0	4	1199	4796
	16	10.0	4	194	776
	17	10.0	10	274	2740
	18	10.0	14	293	4102
	19	10.0	4	313	1252



Resumo do aço

AÇO	DIAM (mm)	C.TOTAL (m)	PESO + 10 % (kg)
CA50	8.0	242.1	105.1
CA60	5.0	366.5	62.1
PESO TOTAL (kg)			
CA50	310.9		
CA60	62.1		

Volume de concreto (C-25) = 5.86 m³
Área de forma = 55.09 m²

